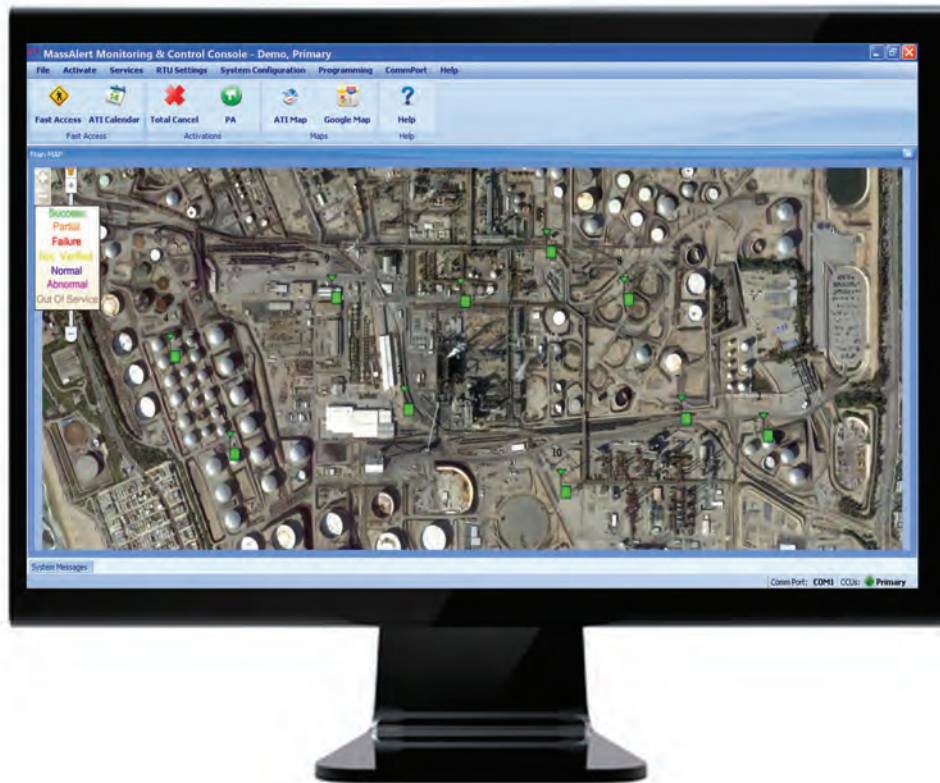


MassAlert®

MassAlert® is an advanced software program that utilizes a graphical user interface for overall control and monitoring of the ATI emergency notification system. MassAlert® is customized for each client's specific system and utilizes field unit icons layered onto location maps and building diagrams of the system to provide system overview and real-time status. The fast activation shortcut feature allows easy access to preconfigured alerting options so users can activate the system quickly - even when under severe distress. In addition, MassAlert is built on a .NET platform providing the flexibility and scalability for it to be interfaced with a wide variety of associated notification services, systems and solutions.

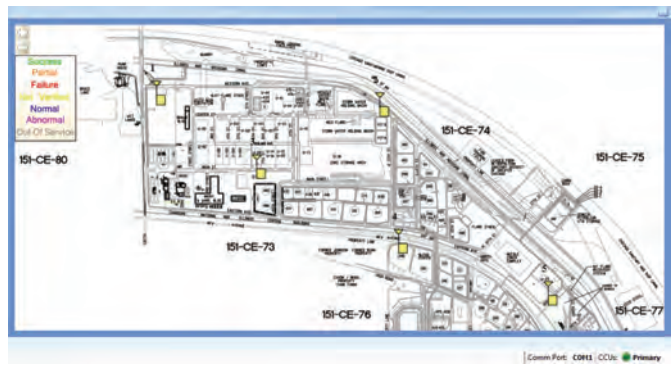


Features

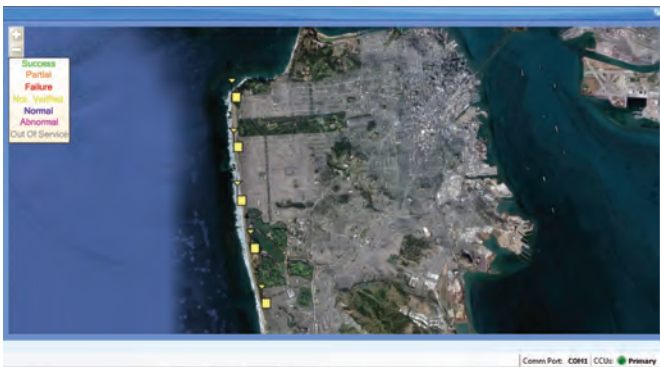
- Single point of activation for entire emergency Mass Notification System
- Easy to use graphical interface utilizing location maps and system sub-views
- Configurable shortcuts for most frequently used activations
- Monitors and displays field unit status for indoor and outdoor equipment
- Control up to 255 field units and 16 control stations, expandable as needed to meet client requirements
- Up to 130 configurable scenarios or pre-configured alerts
- Web-based National Weather Service interface option for severe-weather activation
- Easily configurable, minimal training required
- Web-hosted version of MassAlert® also available
- Client-server remote control option via LAN or Internet
- Optional pop-up messages with text, audio and/or messages to networked computers
- Highly scalable and flexible solution with multiple notification options
- CAP (Common Alerting Protocol) Compliant
- DIACAP approved
- IPAWS compliant



Campus Software Screenshot



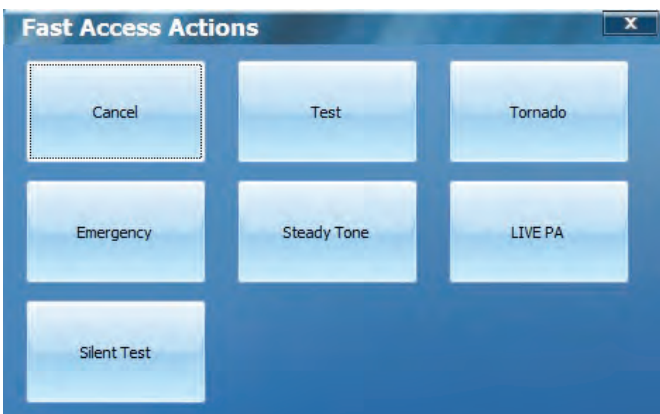
Industrial Software Screenshot



Community Software Screenshot



Military Software Screenshot



Sample Activation



Sample Activation

All information and specifications are subject to change without notice, and may contain typographical or other errors.